



# G-Wiz

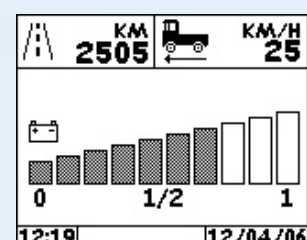
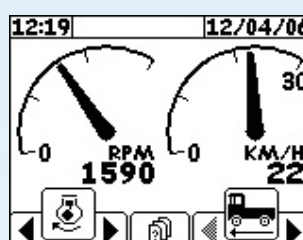
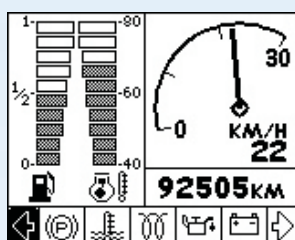
A flexible instrument for controlling operations and the display of data.

Available panel or bracket mounted.



W:128 mm x H:128 mm x D:60

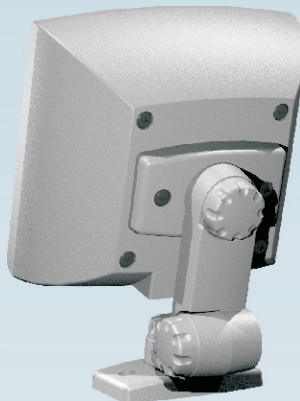
## Sample Screens:





G-Wiz shown including rear case and stalk mounted with just central navigation key.

Front panel can be customised to show specific company livery.



## Specification:

Power supply:	10 - 30Vdc
Current consumption:	500 mA + Output
Display:	160 x 128 pixel dot matrix Variable contrast and adjustable illumination.
Front panel switches:	5 elastomeric (1 x 4-way)
Processor:	Atmel AT91 SAM7 A3 (ARM based) Program storage: 256K Flash
Memory:	Data storage 32kRAM
Inputs:	6 x digital (lo going) 6 x analogue (0 - 7.5V)
Outputs:	6 x Transistor (500mA)
Communications:	2 x RS232, 2 x CAN (or 1 x RS232 + 1 x RS485)
Protection:	Reverse polarity protected
Enclosure:	ABS moulding, aluminium internal chassis
Mounting:	Free standing or panel mount
EMC:	2004/108/EC ISO 14982
Temperature:	0 to 50°C operating -30 to 70°C storage
Vibration:	5G @ 10 to 500Hz
Shock:	100G
Sealing:	Ip54

**Note: For OEM manufacturers the exact functionality is normally customised to the precise requirements. This data sheet is to give an overview of the possibilities.**