

LIFTLOG 1000



A weighing system with 0.5% accuracy designed specifically for forklift trucks operating in the fastest loading environments

With the ever increasing focus on productivity and safe-loading, the new **LIFTLOG 1000** is a cost-effective weighing instrument that reduces loading cycle times and maximises tons per hour performance.

LIFTLOG 1000 weighing system

Features

Accuracy +/- 0.5% of truck capacity

Colour touchscreen display

Store up to 50 tare values

Gross and Net indication

Grand total summary

Automatic total accumulation

Stores function

Communication via SD card and USB

2 serial output ports

Calibration 'Nudge'

Internal audible alarm + load indication bar

Overload and logging

Quick and easy installation & calibration

Pressure based technology

Advantages

Correctly load vehicles or stock check

Clear, uncluttered display provides intuitive operation

Pre-determined pallet and stillage weights for faster operation

Pallet/Stillage and product weight

Total weight and weighing cycles over time

Speeds lift cycle

Save load / lift totals against a total of 100 named memory stores, consisting of up to 1400 lifts which can be given an independent ID reference

Safe & efficient data handling for transfer of stored data to and from office or added external data storage

Supports ICP 300 printer option or communication to PC or Modem using csv or xml file format

Quick and easy calibration adjustment to match site reference. Pin code protect option

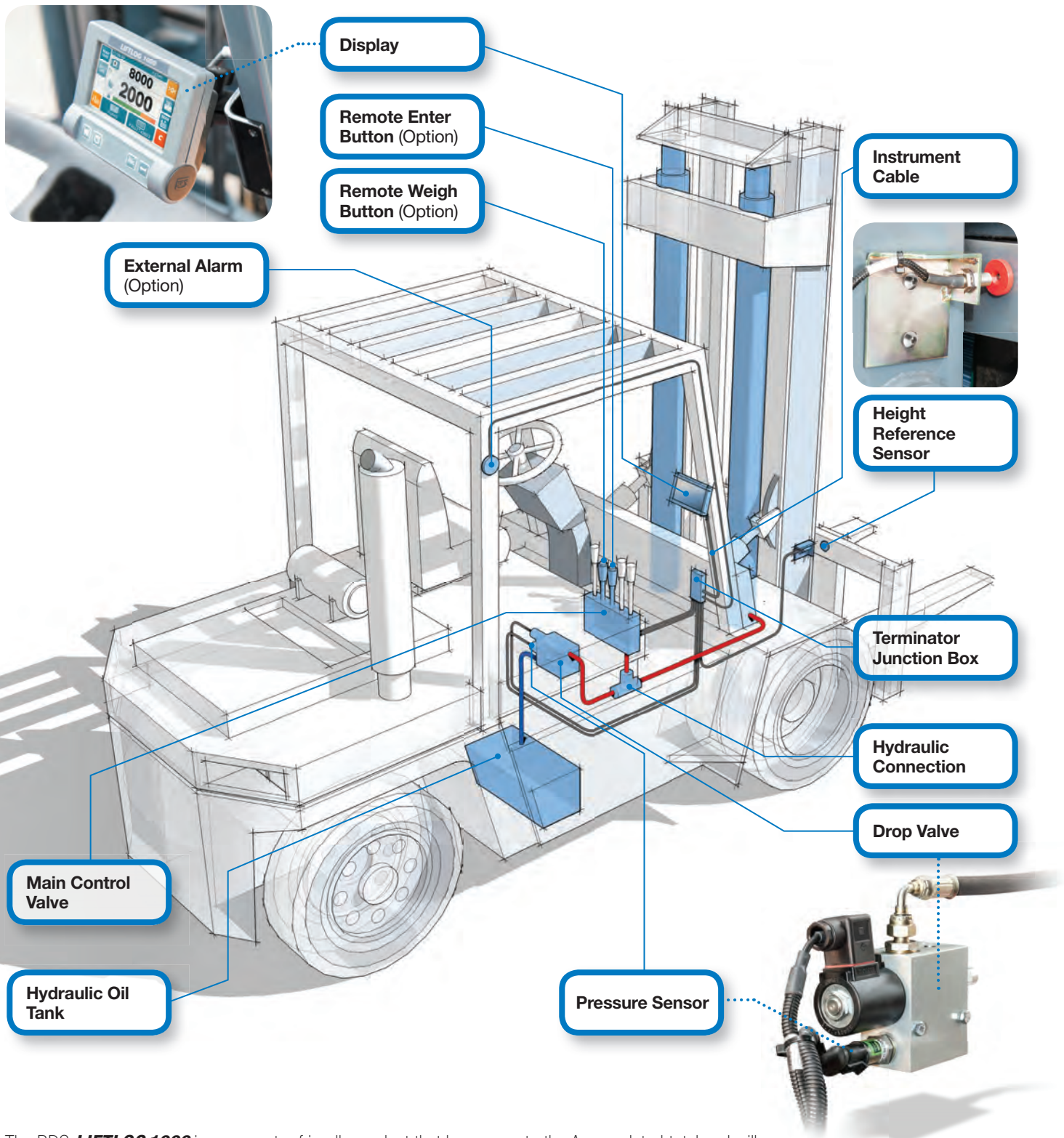
Set alarm at approach and at overload threshold to increase site safety. Colour coded load bar provides clear current load indication.

Stores time and date of last 10 overloads identifying operators and forklifts at risk. Pin code protected

Nationwide service and back up from RDS distributors

Maintains accuracy minimising machine downtime for servicing or repair. Maintains lifting capacity and driver visibility





The RDS **LIFTLOG 1000** is an operator friendly product that has been specifically designed for use on forklift trucks working in a despatch yard or warehouse environment.

Weighing on the forklift removes the need to travel to a static floor scale often remotely located from the stock location or loading bay.

Loading correctly first time eradicates return trips to the stockpile reducing vehicle movement, fuel usage, machine and tyre wear.

Using a sensor to measure hydraulic pressure controlled in a drop valve, the **LIFTLOG 1000** informs the operator of load as a 'calculated' weight in Tonnes, kgs, lbs and US Tons. This load can then be confirmed automatically or via the 'Enter' button and added

to the Accumulated total and will also be added to the Grand total.

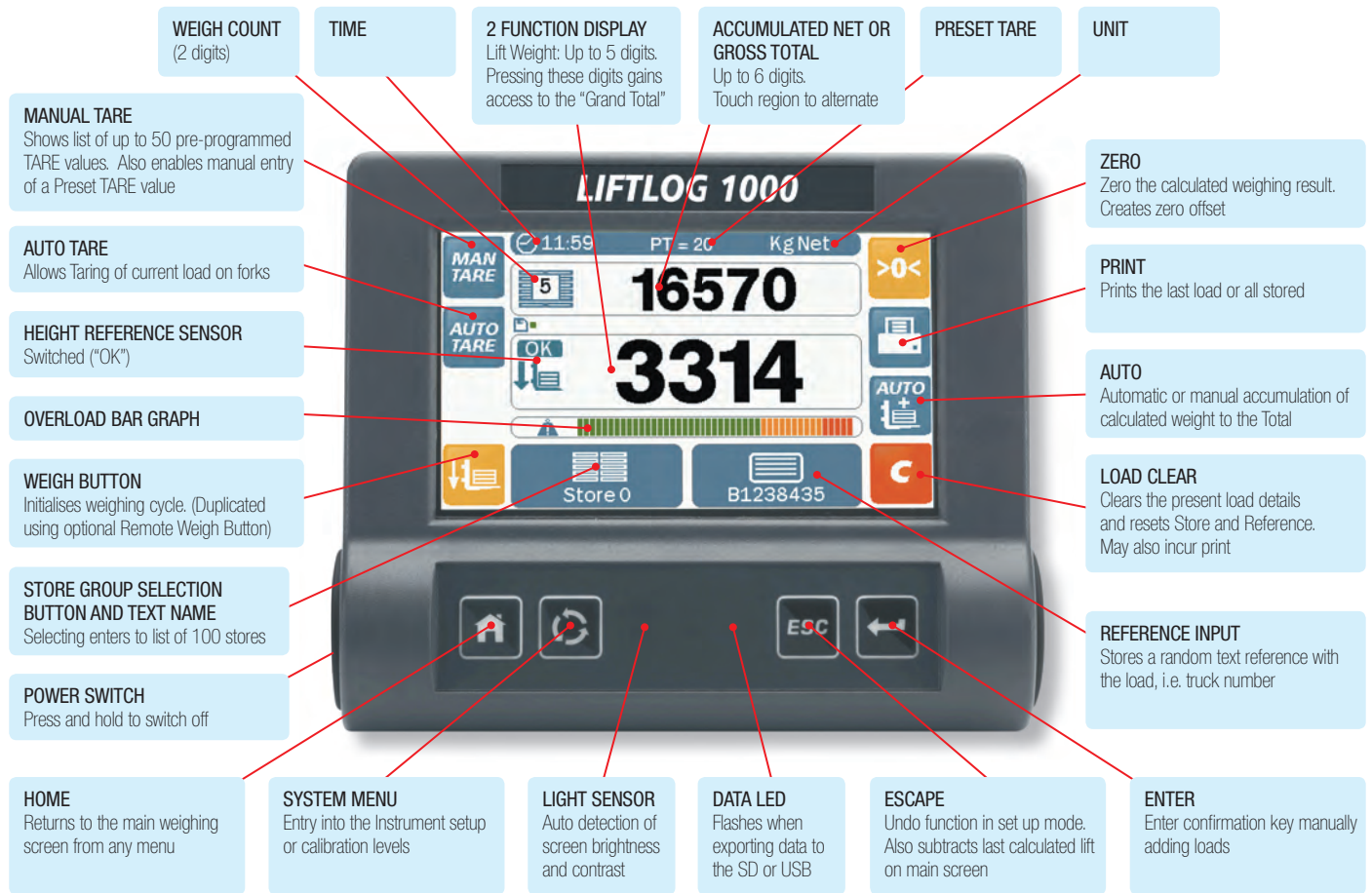
In addition, when approaching and at the point of overload, an internal (and optional external) alarm will sound to further inform the operator of load status.

Approximate load is indicated via an on-screen Load bar.

The **LIFTLOG 1000** uses a 4.3" colour, hi-brightness resistive touchscreen display and additional physical keys providing a modern and ergonomic interface.

The system can be retrofitted onto all types of forklift truck.

LIFTLOG 1000 Quick reference guide



TECHNICAL DETAILS

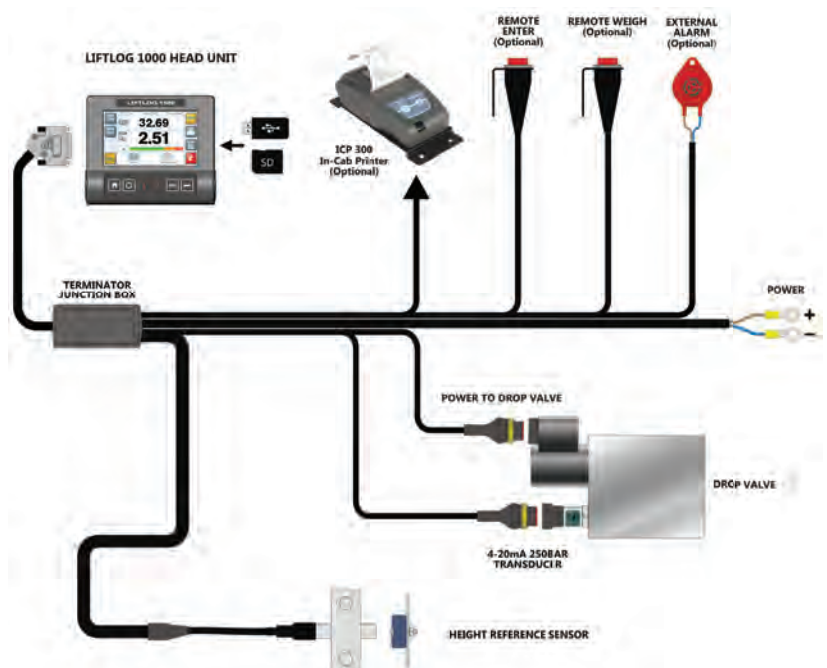
Operating voltage:	12 Vdc
Sensor range:	0 - 250bar
Temperature range:	-20 to +50°C operating
System accuracy:	+/- .5% of truck capacity
Warranty:	1 year
Environmental protection	Instrument unit IP54 Full RFI/EMI protection Sensor & valve IP67

SYSTEM ENHANCEMENTS

- External audible alarm for use in noisy environments. A variety are available dependent on application
- Remote weigh button
- Remote enter button
- Compatible with RDS iSOSYNC PC software

ALSO IN THE RANGE:

- LIFTLOG 100(+) for on-board check weighing and load monitoring
- Speed & Distance 200 for forklift speed and distance monitoring and speed limit alarms.



RDS Technology Ltd, Cirencester Road,
Minchinhampton, Stroud, Glos, GL6 9BH, UK
T: +44 (0)1453 733300 info@rdstec.com

www.rdstec.com

RDS TECHNOLOGY

TOPCON POSITIONING GROUP